



TWO YEARS  
WARRANTY



MADE TO  
MEASURE



FINISHED  
EDGE DETAIL



REMOTE  
OPENING OPTION



TALL SIZES  
AVAILABLE



GLAZING  
OPTION



FRAMES  
AVAILABLE



SIDE HINGED  
DOORS

**MADE IN  
BRITAIN**

**CDC** THE  
CORPORATE  
DOOR  
COMPANY

.....  
**G.R.P. GARAGE DOORS**



1. SETTING OUT, PREPARING AND POLISHING THE MOULD



2. APPLYING LAYERS OF COLOURED GEL COAT



4. CREATING THE REALISTIC WOODGRAIN FINISH



5. FINAL POLISH AND FINISHING



3. LAYING UP AND BONDING SHEETS OF G.R.P. MAT



COVER: A G.R.P. MOULD FROM WHICH WE MAKE A DOOR



# THE CORPORATE DOOR COMPANY

## WELCOME TO THE CORPORATE DOOR COMPANY

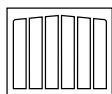
The Corporate Door Company is an independent manufacturer of G.R.P. (Glass Reinforced Polyester) garage doors and components.

G.R.P. is an ideal material for the construction of garage doors, being both light weight and durable, it does not rust, warp or rot and has the same strength to weight ratio as steel.

Our garage doors are hand made to order and are available in a choice of styles to compliment your property in either gloss white or realistic woodgrain effect with a wide range of wood tones and colour finishes.

Every garage door is finished to a very high specification and incorporates a metal and timber framework which is fully encapsulated within the structure of the door for maximum strength and rigidity. An additional smooth gel flow coat is applied to the back of every door and the top, bottom and side edges are finished with a matching colour or wood stain effect for improved aesthetic appearance.

We are very proud of the doors that we make. Our team of experienced craftsmen take great care and spend time to ensure that each and every garage door is of the highest quality and as perfect as it possibly can be.

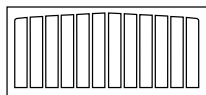


### SINGLE DOOR - SIZES

MIN WIDTH		MAX WIDTH
2032mm [6'8"]	to	2438mm [8'0"]
MIN HEIGHT		MAX HEIGHT
1880mm [6'2"]	to	2134mm [7'0"]

### SINGLE TALL DOOR SIZES

MIN WIDTH		MAX WIDTH
2083mm [6'10"]	to	2438mm [8'0"]
MIN HEIGHT		MAX HEIGHT
2134mm [7'0"]	to	2438mm [8'0"]



### DOUBLE DOOR - SIZES

MIN WIDTH		MAX WIDTH
4115mm [13'6"]	to	4724mm [15'6"]
MIN HEIGHT		MAX HEIGHT
1880mm [6'2"]	to	2134mm [7'0"]

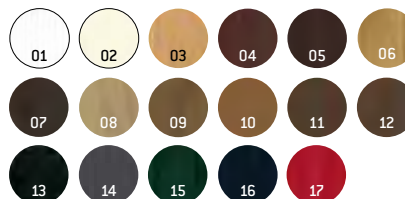


## THE ASHTEAD

The Ashtead door has an attractive low maintenance wide woodgrain finish and its style is suited to both new build and traditional properties. This door is available in a single tall version with sizes up to 2438mm [8'0"] high.

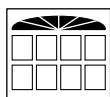
### G.R.P. WOODGRAIN COLOUR OPTIONS

SEE PAGE 18 FOR DETAILS



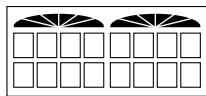
G.R.P. GARAGE DOORS

# THE WEYBRIDGE



## SINGLE DOOR - SIZES

MIN WIDTH		MAX WIDTH
2032mm (6'8")	to	2438mm (8'0")
MIN HEIGHT		MAX HEIGHT
1880mm (6'2")	to	2134mm (7'0")



## DOUBLE DOOR - SIZES

MIN WIDTH		MAX WIDTH
4115mm (13'6")	to	4572mm (15'0")
MIN HEIGHT		MAX HEIGHT
1880mm (6'2")	to	2134mm (7'0")



TWO YEARS WARRANTY



MADE TO MEASURE



FINISHED EDGE DETAIL



REMOTE OPENING OPTION



SECURITY LOCKING



GLAZING OPTION



FRAMES AVAILABLE



MADE IN THE UK

## THE WEYBRIDGE

The Weybridge door has an elliptical sunray moulded into the door. The raised and fielded panels are taken from the popular Georgian door design. This door is supplied with black opaque windows as standard, but can be fitted with Perspex windows if required. Single door shown with optional Perspex windows.

### G.R.P. COLOUR OPTIONS

SEE PAGE 18 FOR DETAILS

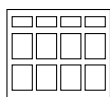


### GLAZING OPTIONS

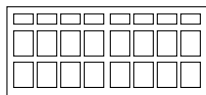
SEE PAGE 19 FOR DETAILS



Please note: black windows are opaque and cannot be seen through.

**SINGLE DOOR - SIZES**

MIN WIDTH		MAX WIDTH
2032mm (6'8")	to	2540mm (8'4")
MIN HEIGHT		MAX HEIGHT
1880mm (6'2")	to	2286mm (7'6")

**DOUBLE DOOR - SIZES**

MIN WIDTH		MAX WIDTH
2743mm (9'0")	to	4877mm (16'0")
MIN HEIGHT		MAX HEIGHT
1880mm (6'2")	to	2286mm (7'6")

TWO YEARS  
WARRANTYMADE TO  
MEASUREFINISHED  
EDGE DETAILREMOTE  
OPENING OPTIONSECURITY  
LOCKINGGLAZING  
OPTIONFRAMES  
AVAILABLEMADE IN  
THE UKTALL SIZES  
AVAILABLE**THE RICHMOND**

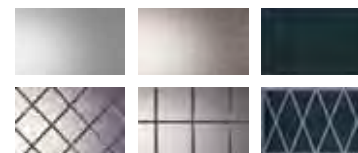
The Richmond door's Georgian design is manufactured in maintenance free gloss white G.R.P. with sharply defined raised and fielded panels and deeply defined mouldings. Double door shown with optional Perspex windows. This door is available in a single tall version with sizes up to 2286mm (7'6") high.

**G.R.P. COLOUR OPTIONS**

SEE PAGE 18 FOR DETAILS

**GLAZING OPTIONS**

SEE PAGE 19 FOR DETAILS



Please note: black windows are opaque and cannot be seen through.

G.R.P. GARAGE DOORS

# THE BROCKHAM



TWO YEARS WARRANTY



MADE TO MEASURE



FINISHED EDGE DETAIL



REMOTE OPENING OPTION



SECURITY LOCKING



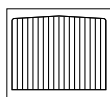
FRAMES AVAILABLE



MADE IN THE UK

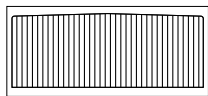
## THE BROCKHAM

The Brockham door has a traditional vertical tongued and grooved panel with a textured woodgrain effect.



### SINGLE DOOR - SIZES

MIN WIDTH		MAX WIDTH
1981mm [6'6"]	to	2388mm [7'10"]
MIN HEIGHT		MAX HEIGHT
1981mm [6'6"]	to	2134mm [7'0"]

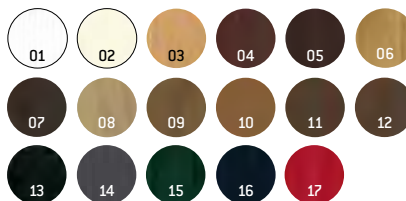


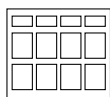
### DOUBLE DOOR - SIZES

MIN WIDTH		MAX WIDTH
4115mm [13'6"]	to	4267mm [14'0"]
MIN HEIGHT		MAX HEIGHT
1981mm [6'6"]	to	2134mm [7'0"]

### G.R.P. WOODGRAIN COLOUR OPTIONS

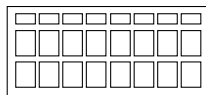
SEE PAGE 18 FOR DETAILS





### SINGLE DOOR - SIZES

MIN WIDTH		MAX WIDTH
2032mm [6'8"]	to	2438mm [8'0"]
MIN HEIGHT		MAX HEIGHT
1880mm [6'2"]	to	2286mm [7'6"]



### DOUBLE DOOR - SIZES

MIN WIDTH		MAX WIDTH
2515mm [8'4"]	to	4877mm [16'0"]
MIN HEIGHT		MAX HEIGHT
1880mm [6'2"]	to	2134mm [7'0"]



TWO YEARS WARRANTY



MADE TO MEASURE



FINISHED EDGE DETAIL



REMOTE OPENING OPTION



SECURITY LOCKING



GLAZING OPTION



FRAMES AVAILABLE



MADE IN THE UK



TALL SIZES AVAILABLE

## THE COBHAM

The Cobham is an impressive door, with the appearance of a solid timber panelled door but without any of the associated maintenance problems. Single door shown with optional Perspex windows.

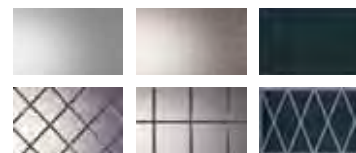
### G.R.P. WOODGRAIN COLOUR OPTIONS

SEE PAGE 18 FOR DETAILS

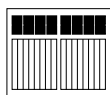
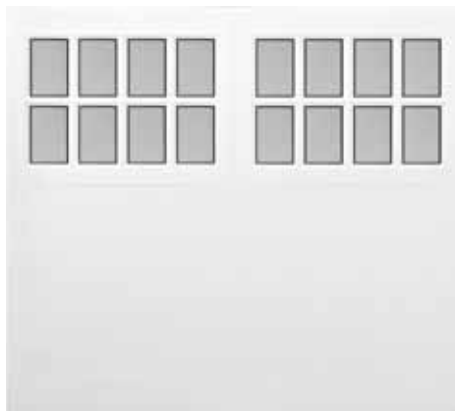


### GLAZING OPTIONS

SEE PAGE 19 FOR DETAILS

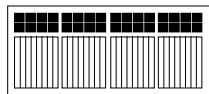


Please note: black windows are opaque and cannot be seen through.



### SINGLE DOOR - SIZES

MIN WIDTH		MAX WIDTH
2134mm [7'0"]	to	2134mm [7'0"]
MIN WIDTH		MAX WIDTH
2185mm [7'2"]	to	2438mm [8'0"]
MIN HEIGHT		MAX HEIGHT
1931mm [6'4"]	to	2134mm [7'0"]



### DOUBLE DOOR - SIZES

MIN WIDTH		MAX WIDTH
4267mm [14'0"]	to	4724mm [15'6"]
MIN HEIGHT		MAX HEIGHT
1931mm [6'4"]	to	2134mm [7'0"]



TWO YEARS WARRANTY



MADE TO MEASURE



FINISHED EDGE DETAIL



REMOTE OPENING OPTION



SECURITY LOCKING



GLAZING OPTION



FRAMES AVAILABLE



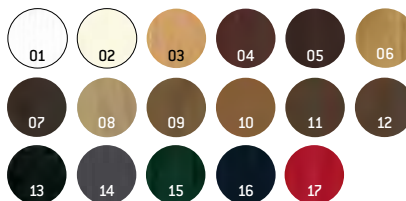
MADE IN THE UK

## THE BETCHWORTH

The Betchworth door combines the appearance of traditional side hinged doors with the convenience of a one piece up and over door. The door is supplied with opaque black windows as standard but can be fitted with Perspex windows if required. Single door shown with optional Perspex windows.

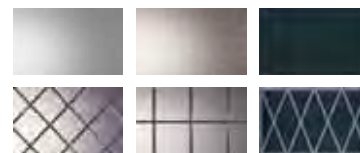
### G.R.P. WOODGRAIN COLOUR OPTIONS

SEE PAGE 18 FOR DETAILS



### GLAZING OPTIONS

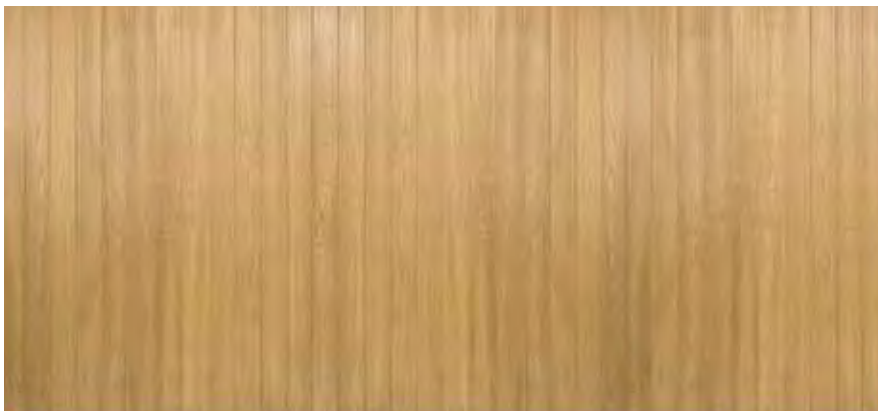
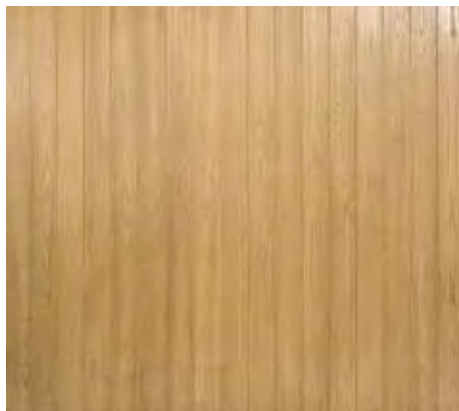
SEE PAGE 19 FOR DETAILS



Please note: black windows are opaque and cannot be seen through.

G.R.P. GARAGE DOORS

# THE VERWOOD



TWO YEARS  
WARRANTY



MADE TO  
MEASURE



FINISHED  
EDGE DETAIL



REMOTE  
OPENING OPTION



SECURITY  
LOCKING



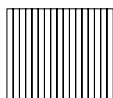
FRAMES  
AVAILABLE



MADE IN  
THE UK

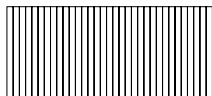


TALL SIZES  
AVAILABLE



## SINGLE DOOR - SIZES

MIN WIDTH		MAX WIDTH
1524mm [5'0"]	to	2438mm [8'0"]
MIN HEIGHT		MAX HEIGHT
1880mm [6'2"]	to	2286mm [7'6"]



## DOUBLE DOOR - SIZES

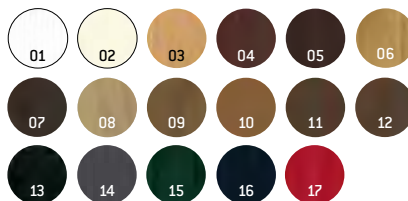
MIN WIDTH		MAX WIDTH
2438mm [8'0"]	to	4877mm [16'0"]
MIN HEIGHT		MAX HEIGHT
1880mm [6'2"]	to	2286mm [7'6"]

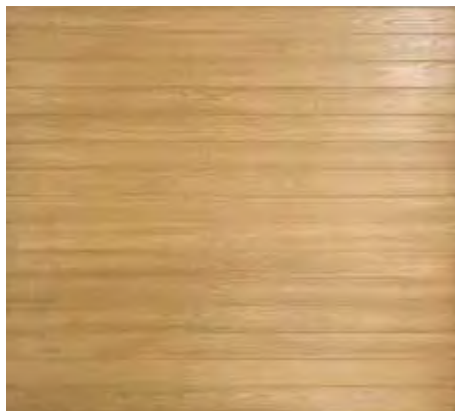
## THE VERWOOD

The Verwood door is a vertical panelled door with 125mm [5"] wide tongue and groove panels. Available in a range of wood tones and colours with a realistic natural woodgrain finish. This door is available in both single and double tall versions with sizes up to 2286mm [7'6"] high.

## G.R.P. WOODGRAIN COLOUR OPTIONS

SEE PAGE 18 FOR DETAILS





ONLY AVAILABLE AS A SINGLE DOOR



TWO YEARS  
WARRANTY



MADE TO  
MEASURE



FINISHED  
EDGE DETAIL



REMOTE  
OPENING OPTION



SECURITY  
LOCKING



FRAMES  
AVAILABLE



MADE IN  
THE UK



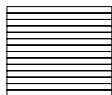
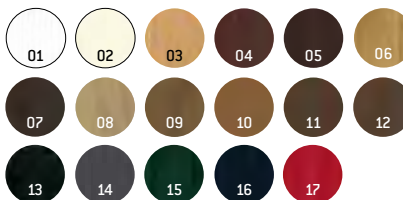
TALL SIZES  
AVAILABLE

## THE WOODSIDE

The Woodside door is a Verwood door turned 90°. Only available as a single door with 125mm (5") high horizontal tongue and groove panels. Available in a range of wood tones and colours with a realistic natural woodgrain finish. This door is available in a single tall version with sizes up to 2438mm (8'0") high.

### G.R.P. WOODGRAIN COLOUR OPTIONS

SEE PAGE 18 FOR DETAILS



### SINGLE DOOR - SIZES

MIN WIDTH		MAX WIDTH
1829mm [6'0"]	to	2286mm [7'6"]
MIN HEIGHT		MAX HEIGHT
1880mm [6'2"]	to	2438mm [8'0"]

G.R.P. GARAGE DOORS

# THE KINGSTON



TWO YEARS WARRANTY



MADE TO MEASURE



FINISHED EDGE DETAIL



REMOTE OPENING OPTION



SECURITY LOCKING



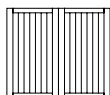
FRAMES AVAILABLE



MADE IN THE UK

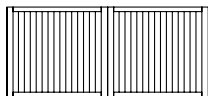


TALL SIZES AVAILABLE



## SINGLE DOOR - SIZES

MIN WIDTH		MAX WIDTH
2134mm [7'0"]	to	2540mm [8'4"]
MIN HEIGHT		MAX HEIGHT
1982mm [6'6"]	to	2286mm [7'6"]



## DOUBLE DOOR - SIZES

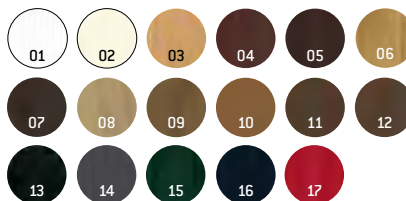
MIN WIDTH		MAX WIDTH
4267mm [14'0"]	to	4724mm [15'6"]
MIN HEIGHT		MAX HEIGHT
2134mm [7'0"]	to	2286mm [7'6"]

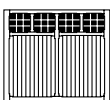
## THE KINGSTON

The Kingston door has tongue and groove effect panels with a realistic textured natural woodgrain finish.

## G.R.P. WOODGRAIN COLOUR OPTIONS

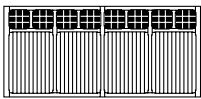
SEE PAGE 18 FOR DETAILS





### SINGLE DOOR - SIZES

MIN WIDTH		MAX WIDTH
2134mm [7'0"]	to	2438mm [8'0"]
MIN HEIGHT		MAX HEIGHT
2134mm [7'0"]	to	2286mm [7'6"]



### DOUBLE DOOR - SIZES

MIN WIDTH		MAX WIDTH
4267mm [14'0"]	to	4724mm [15'6"]
MIN HEIGHT		MAX HEIGHT
2134mm [7'0"]	to	2286mm [7'6"]

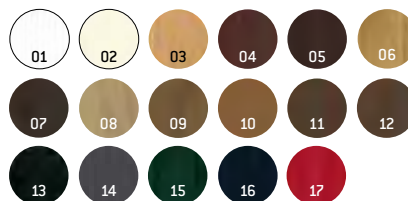
- TWO YEARS WARRANTY
- MADE TO MEASURE
- FINISHED EDGE DETAIL
- REMOTE OPENING OPTION
- SECURITY LOCKING
- GLAZING OPTION
- FRAMES AVAILABLE
- MADE IN THE UK

## THE LINGFIELD

The Lingfield is an impressive door, with the appearance of a popular style timber door but without any of the associated maintenance problems. The door is supplied with Stippled Perspex windows as standard but can be fitted with opaque black windows if required.

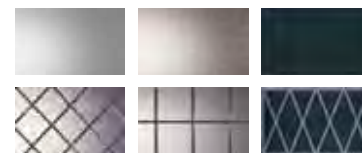
### G.R.P. WOODGRAIN COLOUR OPTIONS

SEE PAGE 18 FOR DETAILS



### GLAZING OPTIONS

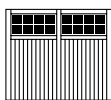
SEE PAGE 19 FOR DETAILS



Please note: black windows are opaque and cannot be seen through.

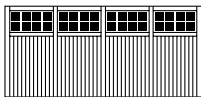
G.R.P. GARAGE DOORS

# THE CHERTSEY



## SINGLE DOOR - SIZES

MIN WIDTH		MAX WIDTH
2235mm (7'3")	to	2590mm (8'5")
MIN HEIGHT		MAX HEIGHT
2134mm (7'0")	to	2286mm (7'6")



## DOUBLE DOOR - SIZES

MIN WIDTH		MAX WIDTH
4267mm (14'0")	to	4572mm (15'0")
MIN HEIGHT		MAX HEIGHT
2134mm (7'0")	to	2286mm (7'6")



TWO YEARS WARRANTY



MADE TO MEASURE



FINISHED EDGE DETAIL



REMOTE OPENING OPTION



SECURITY LOCKING



GLAZING OPTION



FRAMES AVAILABLE



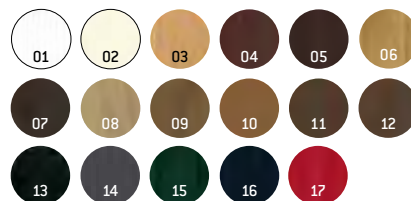
MADE IN THE UK

## THE CHERTSEY

The Chertsey door combines the appearance of traditional side hinged doors with the convenience of a one piece up and over door. The door is supplied with opaque black windows as standard but can be fitted with Stippled Perspex windows if required.

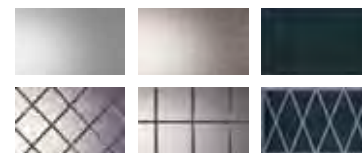
## G.R.P. WOODGRAIN COLOUR OPTIONS

SEE PAGE 18 FOR DETAILS



## GLAZING OPTIONS

SEE PAGE 19 FOR DETAILS



Please note: black windows are opaque and cannot be seen through.

G.R.P. GARAGE DOORS

# THE SUNBURY



ONLY AVAILABLE AS A SINGLE DOOR



TWO YEARS  
WARRANTY



MADE TO  
MEASURE



FINISHED  
EDGE DETAIL



REMOTE  
OPENING OPTION



SECURITY  
LOCKING



GLAZING  
OPTION



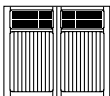
FRAMES  
AVAILABLE



MADE IN  
THE UK

## THE SUNBURY

The Sunbury door combines the appearance of traditional side hinged doors with the convenience of a one piece up and over door. The door is supplied with opaque black windows as standard but can be fitted with Stippled Perspex windows if required.

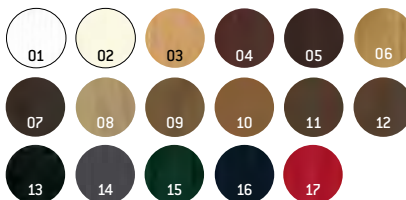


### SINGLE DOOR - SIZES

MIN WIDTH		MAX WIDTH
2134mm (7'0")	to	2438mm (8'0")
MIN HEIGHT		MAX HEIGHT
2134mm (7'0")	to	2286mm (7'6")

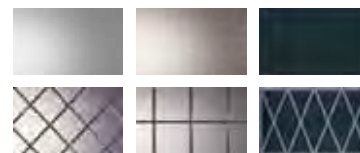
### G.R.P. WOODGRAIN COLOUR OPTIONS

SEE PAGE 18 FOR DETAILS



### GLAZING OPTIONS

SEE PAGE 19 FOR DETAILS



Please note: black windows are opaque and cannot be seen through.

**G.R.P. GARAGE DOORS**

**SIDE HINGED DOORS**

The CDC range of traditional G.R.P. side hinged garage doors and a matching Verwood style personnel door combine all the advantages and practicality of G.R.P. with the convenience of a tried and tested form of operation.

All our garage doors are hand made to order and are manufactured and finished to a very high specification. Our side hinged garage doors have G.R.P. panels built onto individual steel frames preventing any distortion and have an additional flow coat applied to the back of every door for improved aesthetic appearance.

As standard, all side hinged garage doors include: heavy duty steel hinges, a pair of solid garage door stays, centre style for maximum security, weather seals, Euro dead locking latch, black lever handles inside and out and are supplied pre-fitted with frames for ease of installation.

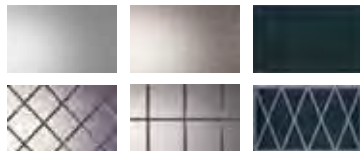
Side hinged garage doors are manufactured with equal sized leaves and open outwards to maximise available clear space inside the garage. As standard the right hand leaf (viewed externally) opens first - left hand leaf opening is available on request.

A range of glazing options are available for the Betchworth, Cobham and Richmond doors, see page 18 for details.

All side hinged and personnel doors to be ordered as an overall outside frame dimension.

**GLAZING OPTIONS**

SEE PAGE 19 FOR DETAILS



Please note: black windows are opaque and cannot be seen through.



- Additional flow coat applied to the back of every door for improved aesthetic appearance.
- Supplied with standard colour pre-fitted frames:



**VERWOOD PERSONNEL ENTRY DOOR - SIZES**

MIN WIDTH		MAX WIDTH
820mm	to	1320mm
MIN HEIGHT		MAX HEIGHT
1989mm	to	2194mm

- Matching Verwood style personnel entry door.
- Centre style between leaves for maximum security - preventing forced entry attempts.
- Weather seals between frame and leaves for draught reduction.
- Heavy duty steel hinges for maximum security and reliable operation.
- Euro dead locking latch and black lever handles inside and out - as standard.
- Optional range of coloured lever handles available.



G.R.P. GARAGE DOORS

# SIDE HINGED DOORS



SIDE HINGED



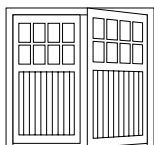
SIDE HINGED



## THE BETCHWORTH - SIDE HINGED

Please see page 18 for colour options and page 19 for glazing options. Shown with standard colour brown frame.

All side hinged doors are ordered as overall outside frame dimension.



### SIDE HINGED DOOR - OVERALL FRAME SIZES

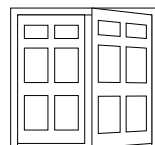
MIN WIDTH		MAX WIDTH
2234mm	to	2539mm
MIN HEIGHT		MAX HEIGHT
1980mm	to	2196mm



## THE COBHAM - SIDE HINGED

Please see page 18 for colour options and page 19 for glazing options. Shown with standard colour black frame.

All side hinged doors are ordered as overall outside frame dimension.



### SIDE HINGED DOOR - OVERALL FRAME SIZES

MIN WIDTH		MAX WIDTH
2234mm	to	2539mm
MIN HEIGHT		MAX HEIGHT
1980mm	to	2196mm

G.R.P. GARAGE DOORS

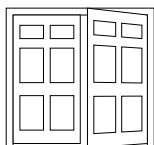
# SIDE HINGED DOORS



## THE RICHMOND - SIDE HINGED

Available in gloss white and gloss magnolia - please see page 18 for colour options and page 19 for glazing options. Shown with standard colour white frame.

All side hinged doors are ordered as overall outside frame dimension.



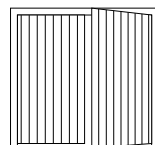
### SIDE HINGED DOOR - OVERALL FRAME SIZES

MIN WIDTH		MAX WIDTH
2234mm	to	2539mm
MIN HEIGHT		MAX HEIGHT
1980mm	to	2196mm

## THE VERWOOD - SIDE HINGED

Please see page 18 for colour options and page 19 for glazing options. Shown with standard colour brown frame.

All side hinged doors are ordered as overall outside frame dimension.



### SIDE HINGED DOOR - OVERALL FRAME SIZES

MIN WIDTH		MAX WIDTH
1930mm	to	2539mm
MIN HEIGHT		MAX HEIGHT
1890mm	to	2196mm



We spend considerable time and take great care reproducing the beautiful look of natural timber by hand applying the wood tone finish to our doors. As with natural timber, some colour variation can occur over the face of an individual door and also between doors.

Please tell us if two doors of the same colour are to be fitted in close proximity to each other so that any colour variations can be kept to a minimum.

Please note when trying to colour match garage doors with other UPVC products always check a colour sample first. For example Rosewood GRP doesn't match Rosewood UPVC where Dark Mahogany GRP is a closer match.

01 - 14 - standard woodgrain colours  
15 - 17 - premium woodgrain colours\*  
18 - 19 - standard smooth gloss colours  
Other RAL colours are available.

\* Please see our price list for details.



## WINDOW GLAZING OPTIONS FOR DOORS WITH THIS SYMBOL



CLEAR PERSPEX



STIPPLED PERSPEX



OPAQUE BLACK\*



STIPPLED PERSPEX  
WITH DIAMOND LEADING



STIPPLED PERSPEX  
WITH SQUARE LEADING



OPAQUE BLACK WITH BORDER  
AND DIAMOND LEADING\*

\*Black windows are opaque and cannot be seen through.



## AUTOMATION

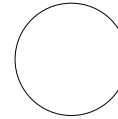
All our garage doors are suitable for automation, giving you the convenience and luxury of remote opening and also increased security for your property.

Please contact us for more information.

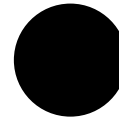


## FRAMES

All of our doors are suitable for fitting into a timber frame or we can supply doors in a steel frame. Frames are available in a range of finishes - white primed, colour painted and Rosewood or Golden Oak woodgrain foil.



WHITE



BLACK



BROWN

Guarantees are subject to the conditions set out below:

1. During the comprehensive 2 year guarantee CDC undertake to repair or replace (at its discretion), and without charge, products or components which have suffered any form of manufacturing defect. Claims must be notified within 3 days of delivery or within a reasonable time after discovery of the defect.
2. Products covered by these guarantees must have been purchased through an authorised CDC distributor or as original equipment attached to a newly built dwelling.
3. The warranties shall apply to normal use only. Normal use constitutes no more than 5 operations (open / close cycles per day).
4. The warranties offered apply to the CDC product only and no consequential damages will apply no matter how caused.
5. No liability will be accepted as a result of normal wear and tear, incorrect storage, incorrect handling, faulty installation, incorrect use or wilful damage.
6. Claims under this guarantee must be made through the original supplier and accompanied by relevant documentation indicating the date of purchase (e.g. receipt).
7. CDC maximum liability shall be the original purchase price inclusive of V.A.T. at the rate.
8. Any product which is subject to a claim:
  - I) Must have been correctly installed in accordance with the installation instructions supplied and thereafter properly maintained by a suitably experienced engineer on a regular basis.
  - II) Must have the manufacturer's reference number still intact.
  - III) Must not have been modified in any way.
9. Claims will not be accepted where the claim is due to:
  - I) Impact or mechanical damage suffered during or following installation e.g. scratches, indentations, scuffs or other surface abrasions.
  - II) Damaged caused by contact with any form of caustic, abrasive or corrosive substance, bird droppings, fire, smoke, floodwater, salts, or abnormal atmospheric pollution.
10. This guarantee excludes normal wear and tear on such items as cones, cables, spindles, lock cylinders, hinges or springs.

CDC G.R.P. doors are individually hand crafted products manufactured to specific customer orders. Due to the nature of the product and the hand finishing process used they may occasionally display small blemishes which do not detract from the overall appearance of the product. These are regarded as being within tolerance when such blemishes are not visible to the naked eye when viewed from a distance of 3 meters. Similarly woodgrain effect products will, like the natural material, display colour variations across their surface and colour will vary from door to door. Ordering doors to match helps to reduce this variation but will not eradicate it entirely.

Size and Deflection - the natural curing process does affect the ultimate product size and a tolerance of +6mm on both height and width is deemed acceptable. Doors in the open position may display a vertical deflection of up to 6mm per liner meter.

Translucency - may vary slightly when viewed from the inside on a bright day due to the variation in laminate thickness. This does not represent a manufacturing defect and overall performance is not affected.

Door Cleaning - periodically clean the door panel using warm water and a soft cloth or sponge, allow to dry naturally. Never use detergent, abrasive, caustic or solvent based cleaners as these may damage the door surface. Bird droppings should be removed immediately as these can be particularly caustic.

Top and Bottom Rails and End Styles - may vary in height or width between doors of the same style depending on size ordered. This is to enable us to cater for your particular size of door. Should you have any concerns please contact CDC before placing an order.

The Corporate Door Company's policy is one of continuous improvement and we reserve the right to change the specification or withdraw any products without prior notice.

All details are correct at time of going to press, October 2018, errors and omissions excepted.





**THE  
CORPORATE  
DOOR  
COMPANY**

**YOUR CORPORATE DOOR COMPANY DISTRIBUTOR IS:**



The Corporate Door Company. 35 to 37 Azura Close, Woolsbridge Industrial Estate, Three Legged Cross, Wimborne, Dorset, BH21 6SZ  
Tel: 01202 829699 - Fax: 01202 820908 - Email: [info@thecorporatedoorcompany.co.uk](mailto:info@thecorporatedoorcompany.co.uk)

Company Registered in England & Wales No. 07036364.

2018/10